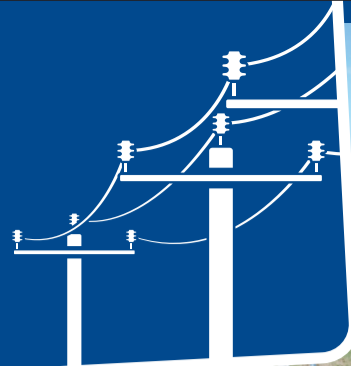


Bigger and Better Electricity Supply



The upgraded Centre Bush substation.

 **THE POWER COMPANY LTD**

If you live in Western, Northern or Central Southland, you're likely to benefit from a new, future-proofed electricity supply with greater capacity and reliability.

In September this year, PowerNet finished the Oreti Valley Project, a \$27.3 million, five year project to upgrade and extend The Power Company's (TPCL) 66kV network to include Centre Bush, Dipton, Lumsden and Mossburn substations.

Seventy-six kilometres of 66kV lines have been installed or upgraded and four substations (Centre Bush, Dipton, Lumsden and Mossburn) rebuilt or upgraded. A new microwave network has also been installed to provide fast protection operations between substations.

"This major project brings significant long-term benefits to local communities. It means an increase of four times network capacity, reliability and supply for potential growth opportunities," says The Power Company chair, Doug Fraser.

"We've appreciated the fantastic support we've had from the Western, Northern and Central Southland communities including their patience during planned outages, and when we've needed to access private land for installation work," he says.

During construction, there were technical challenges to overcome, including installing four 38m steel towers either side of the flood prone Oreti River so that conductors could span the river's 543m width.

The Power Company's mobile substation provided additional capacity while substation upgrades were underway and in November 2017 when higher temperatures meant electricity use was greater than usual.

The new 66kV line and upgraded substations have now been fully commissioned.

"Completing this project means TPCL is well-positioned for increases in energy use and electrification," Mr Fraser says.

"Thanks to the great work of PowerNet staff and their contracting teams, we've been able to complete this major project safely and efficiently."

- Doug Fraser, chair The Power Company Ltd

The 5MVA transformer being lifted in place at Lumsden substation.



One of the four 38m steel towers being delivered to the Oreti River site to be installed.



PowerNet staff and contractors installing the 66kV conductors across the Oreti River.