

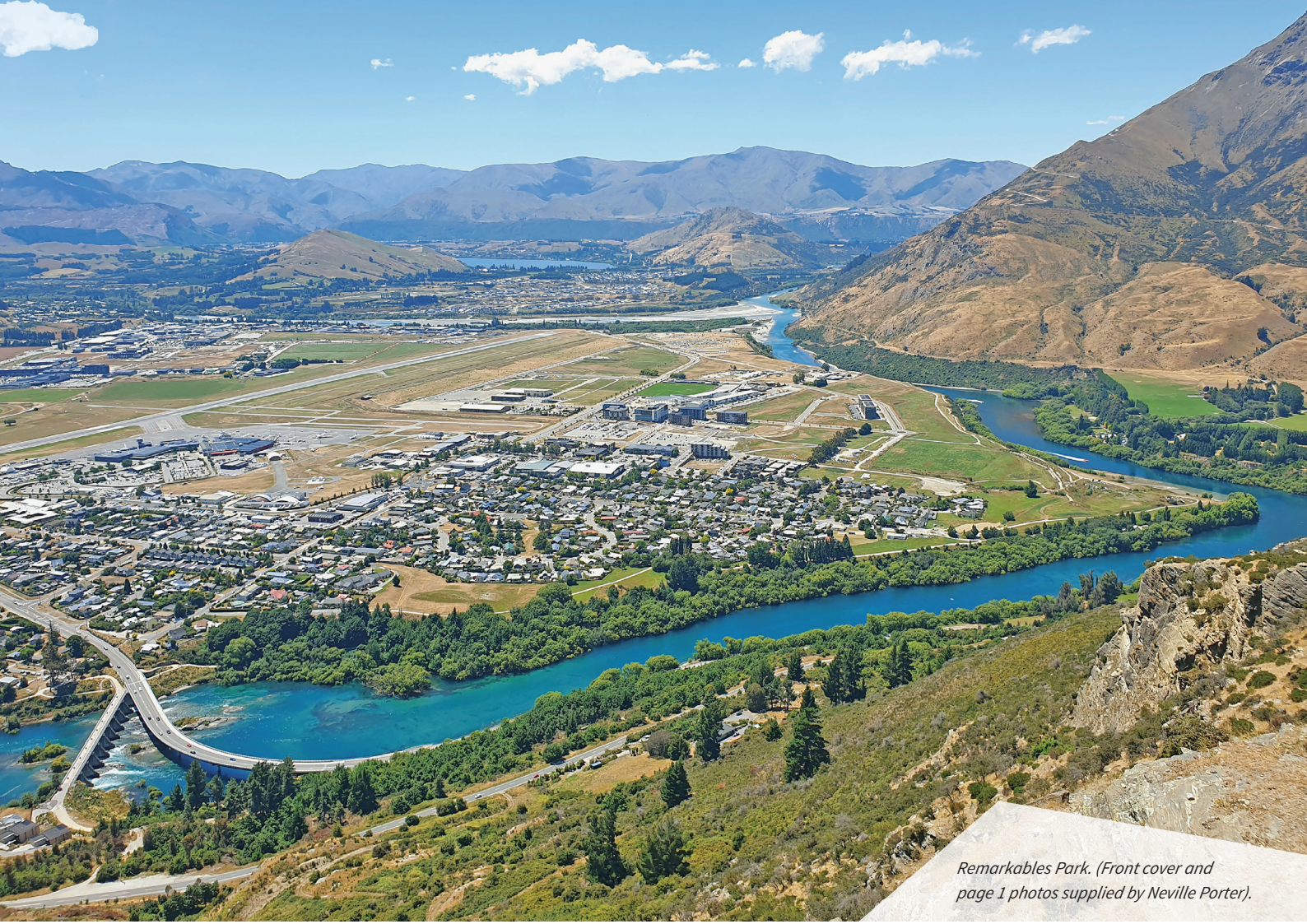


YOUR LOCAL NETWORK

Growing with the regions we serve

Hanley's Farm.

Managed by  **PowerNet**



Remarkables Park. (Front cover and page 1 photos supplied by Neville Porter).

LAKELAND NETWORK

Ready for what you need today, and growing with you for tomorrow.

As the fastest growing region in the country, we know a safe, efficient and reliable electrical infrastructure is the cornerstone of modern living.

Whether it's keeping our homes running, or our businesses humming, having a modern and resilient supporting electricity network is critical to ensuring the region our community has chosen to live, work and play in, is future-proofed for continued growth.

In the Queenstown-Lakes and Central Otago regions, Lakeland Network Limited provides the electricity assets to keep the wheels of life, and the economy, turning.

Our presence in these fast-growing regions is expanding. Lakeland Network is now recognised for its modern and underground electricity network, which is supported by leading electricity management company, PowerNet's superior capability to build and maintain the infrastructure.

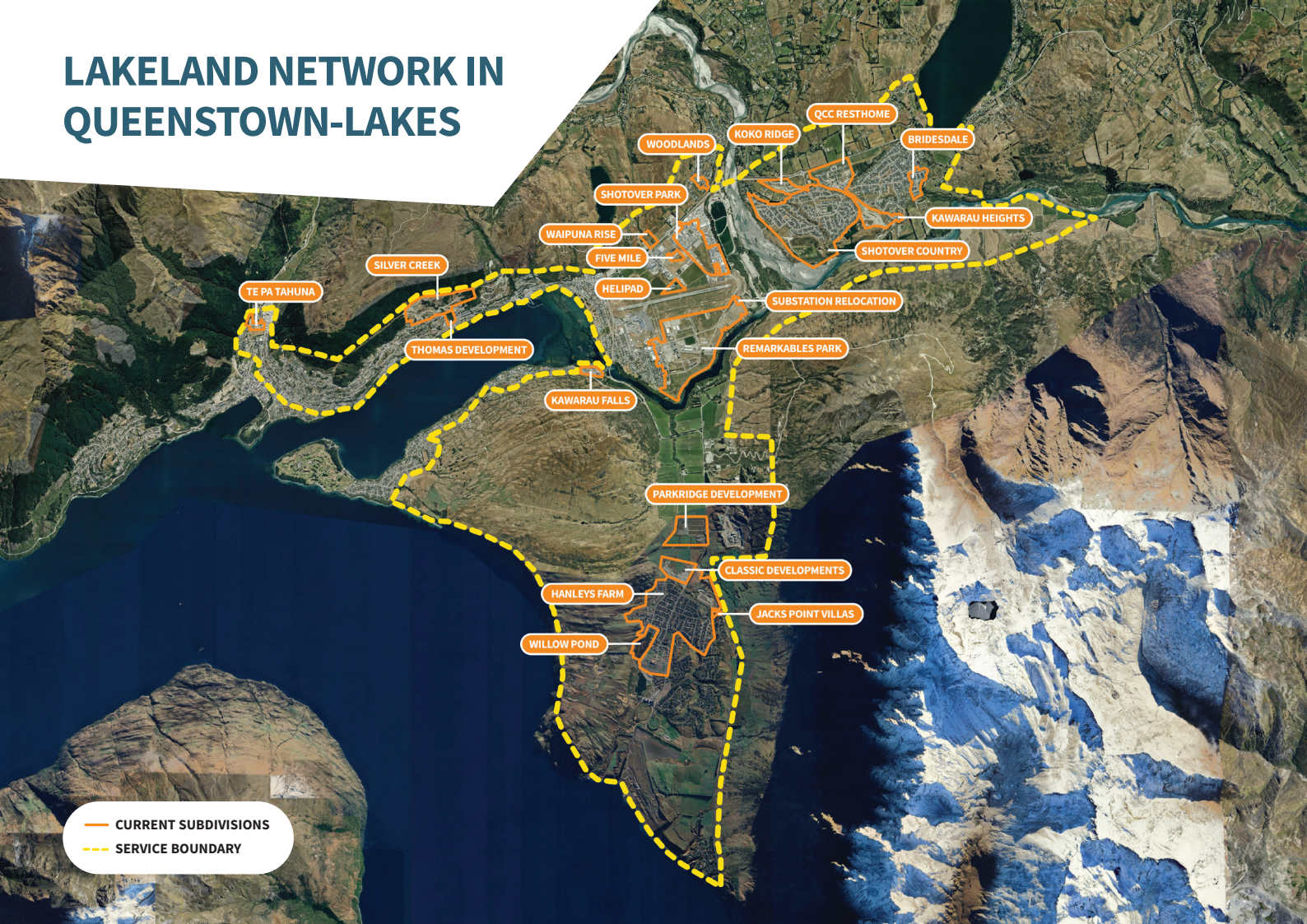
Our network has been supplying the region for over 15 years, and our local team has been working with the community, its developers and partners to ensure there is the required electricity infrastructure to meet the needs of the region today. We have planned for the anticipated growth of tomorrow by continuing to co-develop new subdivisions and commercial developments in this region.

Whether you are a large land-holding or commercial developer, an electrical contractor, or a design consultant, we would love to talk to you. If you have a new development opportunity, or need to discuss expanding a current one, please get in touch with our team of local experts listed at the bottom of this flyer.



www.powernet.co.nz

LAKELAND NETWORK IN QUEENSTOWN-LAKES



WORKING WITH QUEENSTOWN-LAKES

Enabling local growth to continue

The expansion of our operations in the Queenstown-Lakes region has continued, where we believe the Lakeland Network is the network of choice in the region and take pride in being involved in the majority of new developments.

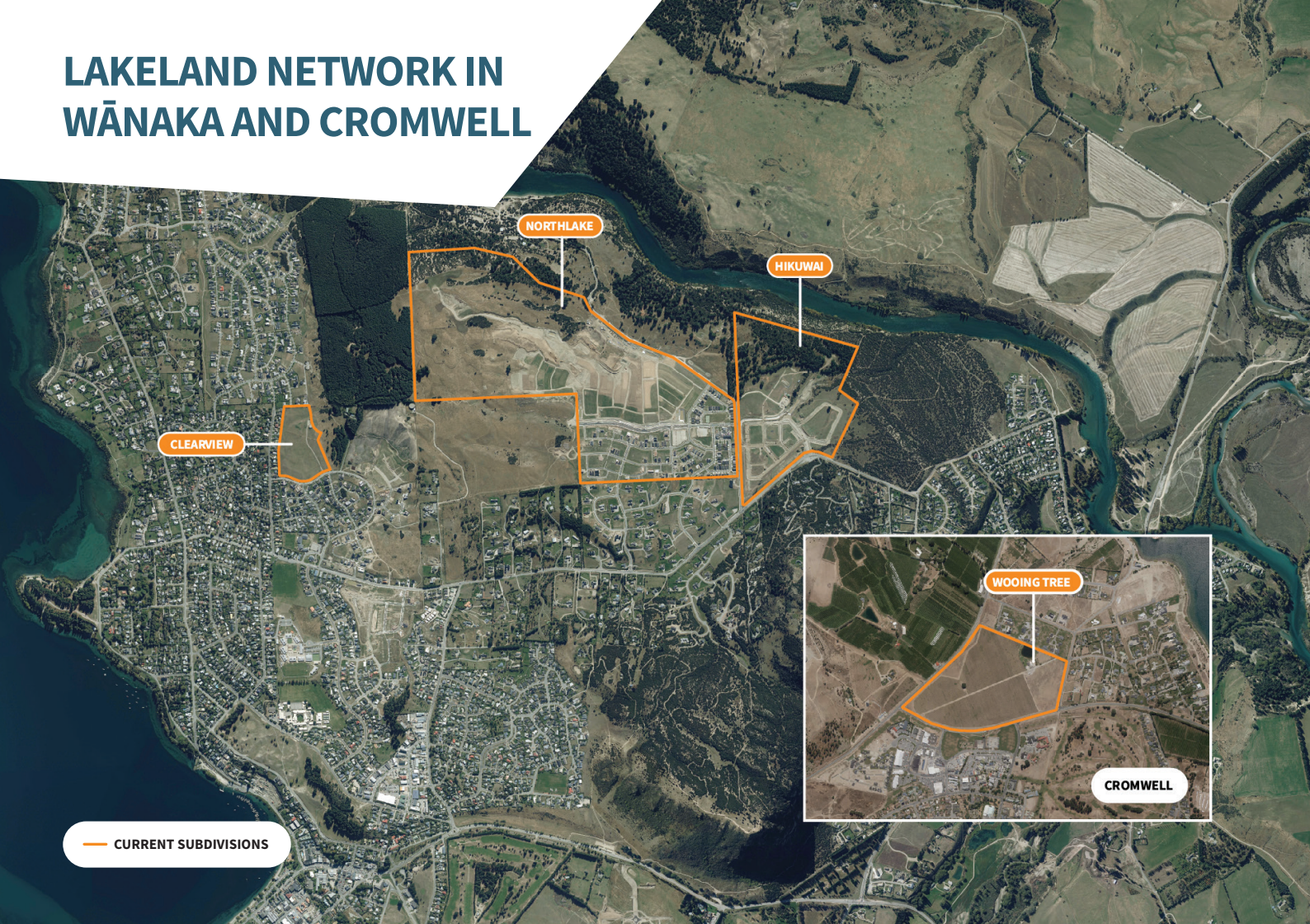
Our network in the region continues to expand, where connection growth is projected to triple over the next few years. We know that a fast-growing region needs to be enabled by a modern network, and with developments arising all the time, we are here to help.

Connected to Transpower's grid exit point, our new network is built, operated and maintained by our local team of experts on the ground – ready to work alongside you, to ensure you and your clients receive the service and supply required.

Partnering with the Lakeland Network offers:

- A modern, reliable underground network, not exposed to the variabilities of weather or the challenges of vegetation
- Multiple connection models, where we work with you to meet your requirements
- A local team that has expanded to accommodate regional growth, on the ground to build, operate and maintain the network
- Expertise with knowledge and experience in the majority of developments across the region
- Flexibility and an ability to adapt to shifting time frames for development connections
- Cost reductions enabled from our capability to manage the electrical reticulation.

LAKELAND NETWORK IN WĀNAKA AND CROMWELL



WORKING WITH WĀNAKA AND CROMWELL

Supporting new developments in our Central Otago region

Lakeland Network is renowned for its excellent reputation amongst commercial and residential developers in the Central Otago region.

We have become a recognised co-developer in the area, where our modern, underground network is enabling growth to continue.

Get in touch so we can tell you about:

- The benefits of our underground, modern network
- Our range of connection models available to meet your needs
- Our local team – and the benefits they bring by being on the ground to adapt to your timelines, build and operate the network, and maintain it as required once it is commissioned
- Our proven track record across the region, being involved in developments in Wānaka and Cromwell
- The cost reductions enabled by our ability to manage the electrical reticulation.

GET IN TOUCH TODAY

We would love to talk some more.

For more information, or to discuss your project,
get in touch with one of our local experts.



Growth enquiries



Kewal Bagal
GM Business & Customer Growth
Email: kbagal@powernet.co.nz
Cell: +64 21 606 541

Current development status



Tony Rooke
Senior Project Manager
Email: trooke@powernet.co.nz
Cell: +64 27 256 3814

Engineering enquiries



Phil Chittock
Network Engineer
Email: pchittock@powernet.co.nz
Cell: +64 27 229 3119

Network connections



Robi Fisher
Operations Distribution Administrator
Email: rfisher@powernet.co.nz
Cell: +64 27 231 2707

General enquiries

Email: lakelandenquiries@powernet.co.nz

